



Cloud Services by 3rd Element

The Cloud can seem ambiguous at times. What is and what benefit does it have, if any?



The cloud is a fancy way of saying offsite servers. Many businesses still have onsite servers in a room somewhere. **“The Cloud”** involves utilizing servers offsite.

Let’s quickly compare the primary differences between servers onsite versus the cloud:

Onsite



Larger upfront **capital expense**



Monthly expense oftentimes lower than cloud



Makes scaling more difficult.

- Have to purchase additional resources and physically install (takes time and money)
- The need to purchase a new, more powerful server if resources get maxed out



Risk of **physical damage, water, theft, etc.**



All data and applications are onsite, making internet speed less important.

- This can make remote work more difficult

Cloud (offsite servers)



Minimal upfront expense to move to the cloud



Oftentimes **larger monthly expense**



Makes scaling extremely easy

- Assign new resources as organization grows



Hosted in secure data center

- Virtually eliminates physical damage, water, theft, etc



Data and applications offsite, so internet speed does become more important



Structured to make **remote work** as simple as working in the office

It may not be completely clear to you which of the two options are the “winners.” That’s because it does greatly depend on your organizational needs.

The cloud is the recommendation we usually have for our clients, but sometimes that recommendation is stronger than others, depending on:



1. How fast they plan on growing



2. How many locations they currently or plan on having



3. How many remote users they currently or plan on having



4. The applications, databases, and data currently on the onsite servers



5. Operating budget allocated to IT Services

These are the primary considerations when identifying whether the cloud is the right option for your organization or not.

The good thing is, moving to a cloud environment is easy. The “cloud” conversation usually occurs when the onsite server is preparing to be decommissioned.

The question is, “do we purchase another server or do we migrate to the cloud?”



After reviewing the above points, you might realize cloud **IS** the right option. Here's the difference between migrating to another onsite server or the cloud
(spoiler alert: It does not change much!)

Onsite to Onsite Server migration:



Preparation

- Housekeeping: Identifying all active applications and data for migration
- Archiving or removing stale data that is no longer needed for operations



Quoting Server

- Identifying resources needed for the server + **30%/40%/50% buffer (depending on growth goals)**



Migration

- Applications and data are moved over in a systematic approach to the onsite server to eliminate downtime
- Once migrated, cutover day is scheduled. Migration team and help desk briefed on cutover day to be ready to act in case of any unintended disruptions (rare)

Onsite to Cloud migration:



Preparation

- Housekeeping: Identifying all active applications and data for migration
- Archiving or removing stale data that is no longer needed for operations
- **Ensuring sufficient internet speed – at least 100 download and 100 upload is recommended**



Quoting Server

- Identifying resources needed for the server (**no buffer needed as scaling is as simple as adjusting resources to the cloud server**)



Migration

- Applications and data are moved over in a systematic approach to the cloud server to eliminate downtime
- Once migrated, cutover day is scheduled. Migration team and help desk briefed on cutover day to be ready to act in case of any unintended disruptions (rare)

That's it! While we go through a 30-point checklist during this process, I thought it would be helpful for you to see the high-level process that occurs in each scenario.



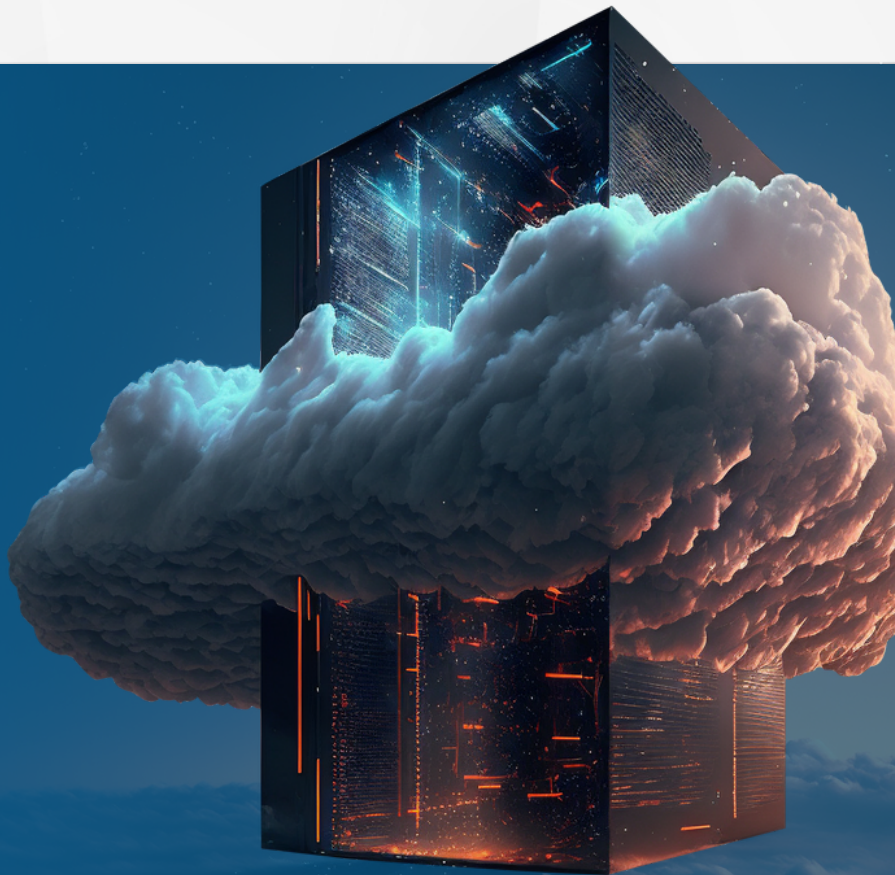
Why is the Cloud so important?

Business owners oftentimes shy away from the cloud (**even when their vision perfectly aligns with a cloud environment**) because they don't understand what it is or the process to get there.


When laid out like this, they are much more willing to invest and move to the Cloud.

Change can be difficult, but necessary. Relying on an onsite server for another 6 years is rarely our recommendation, but we will never force it if it doesn't match with the strategic vision of your organization.


Let's have a deeper discussion and identify what's right for you!



3rdelement
CONSULTING

 717-763-6800

 sales@3rdelement.com

 www.3rdelement.com